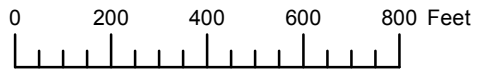


THIS MAP WAS PREPARED FOR ASSESSMENT PURPOSE ONLY



SECTION 28 T.6S. R.39E. W.M.  
BAKER COUNTY  
1" = 400'

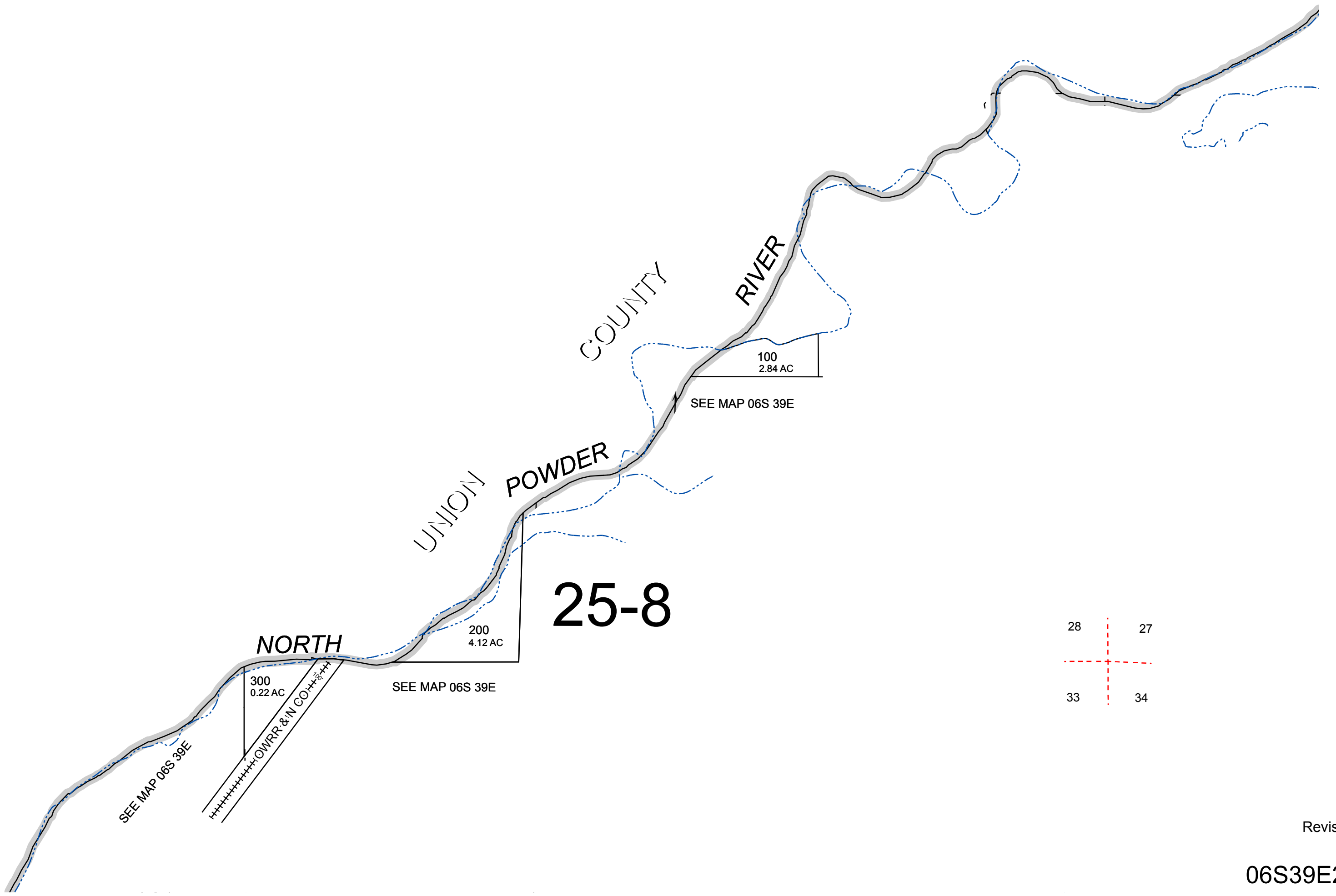
06S39E28

20 21  
29 28

21 22  
28 27

29 28  
32 33

28 27  
33 34



25-8

Revised:

06S39E28