

REVISED 11-15-2017

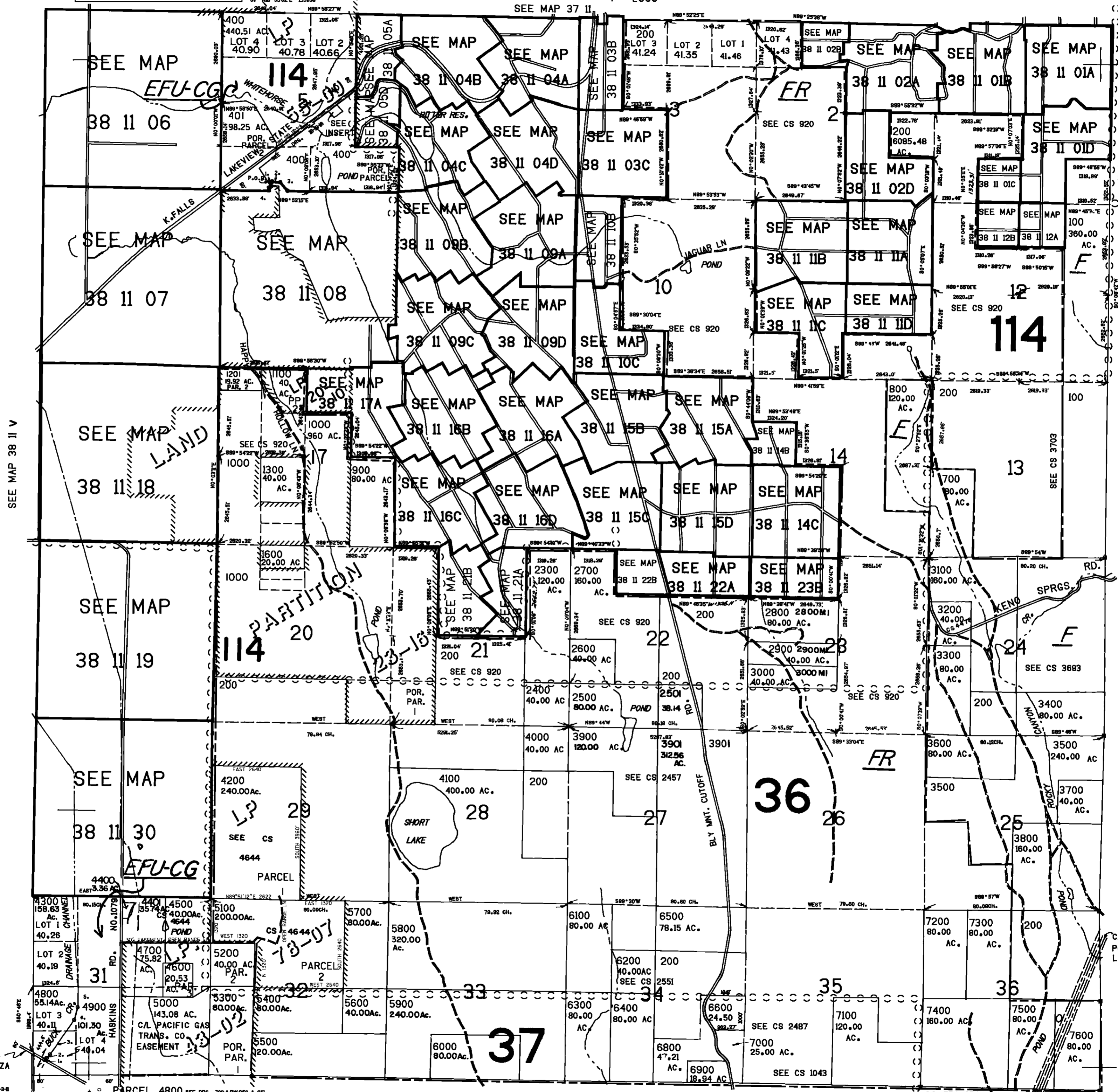
THIS MAP WAS PREPARED FOR ASSESSMENT PURPOSE ONLY

PORTION OF MAP 38 11 08 IN S1/2 SW1/4 SEC. 05; P.O.B. IS N77°50'31"E 1496.15' FROM NW COR. SEC.

- 1. N86°50'40"E 60'
- 2. S86°14'55"E 250.68'
- 3. S40°53'58"E 448.75'
- 4. N03°24'46"W 156.58'
- 5. N89°55'02"E 156.58'

T.38S. R.11E. W.M.
 KLAMATH COUNTY
 1" = 2000'

38 11 & INDEX



PARCEL 500:
 INSERT
 SEC. 5
 1"=400'

CANCELLED NO.
 300
 4401 AI
 600
 1100AI-6
 4400AI
 1200
 1400
 1500
 1700
 1800
 1900
 2000
 2100
 2200
 6600MI

SEE MAP 38 12

38 11 & INDEX 205.000

SEE MAP 38 11 V

SEE DRG. 59-3-11

PARCEL 4800 SEE DRG. 700-A-RW-650 & 652
 1. N28°12'E 30.6'
 2. 6" C.L. LC - N31°53'E 122.8'
 3. N35°54'E 129.5'
 4. 9" C.L. LC - N17°04'E 404.4'
 5. N126°W 667.3' M/L

SEE MAP 39 11

SEE CS 310

C/L BPA TRANS LINE
 EASEMENT
 (C) 01771 YMAI IN MO. 1